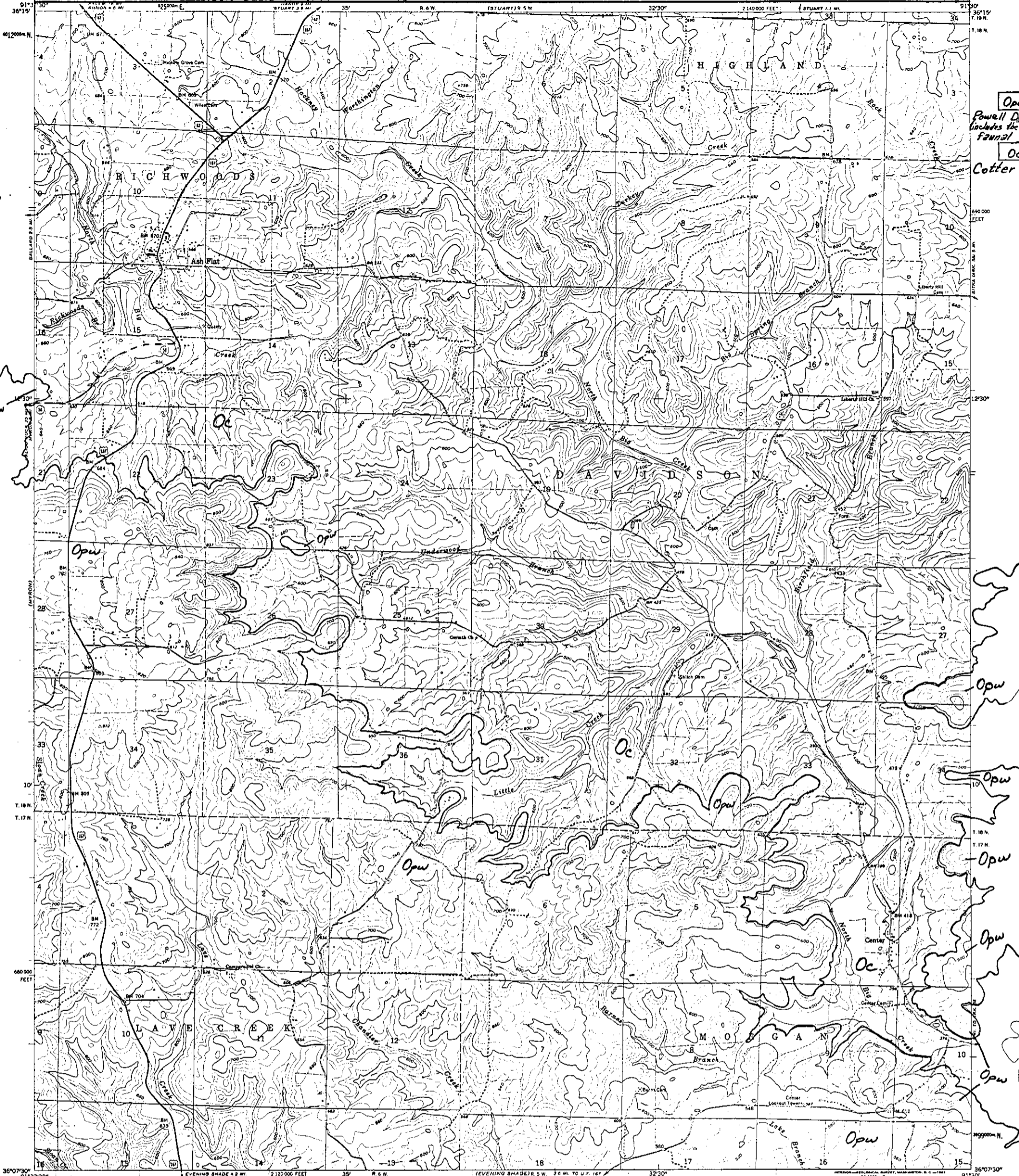
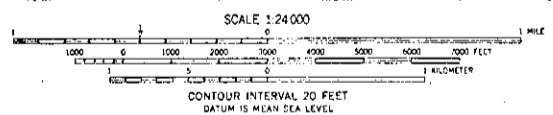


Reduce this line to



Opw
Powell Dol.
(includes the Smithville
faunal zone)
Oc
Cotter Dol.

Mapped, edited, and published by the Geological Survey
Control by USGS and USC&GS
Topography by photogrammetric methods from aerial
photographs taken 1959. Field checked 1962
Polyconic projection. 1927 North American datum
30,000-foot grid based on Arkansas coordinate system, north zone
7,500-foot Universal Transverse Mercator grid lines
Zone 15 shown in blue
The dashed lines indicate selected surface and field lines when
generally visible on aerial photographs. This information is uncheck-



ROAD CLASSIFICATION
Heavy-duty ——— Light-duty ———
Medium-duty ——— Unimproved dirt ———
U.S. Route — State Route
EE. Glick, U.S.G.S. -- 1971
ASH FLAT, ARK
N3607.5—W9130/7.5
1962

MASTER COPY

THIS MAP COMPLIES WITH NATIONAL MAP ACCURACY STANDARDS
FOR SALE BY U.S. GEOLOGICAL SURVEY, DENVER 25, COLORADO OR WASHINGTON 25, D. C.
AND BY THE ARKANSAS GEOLOGICAL AND CONSERVATION COMMISSION, LITTLE ROCK, ARKANSAS
A FOLDER DESCRIBING TOPOGRAPHIC MAPS AND SYMBOLS IS AVAILABLE ON REQUEST